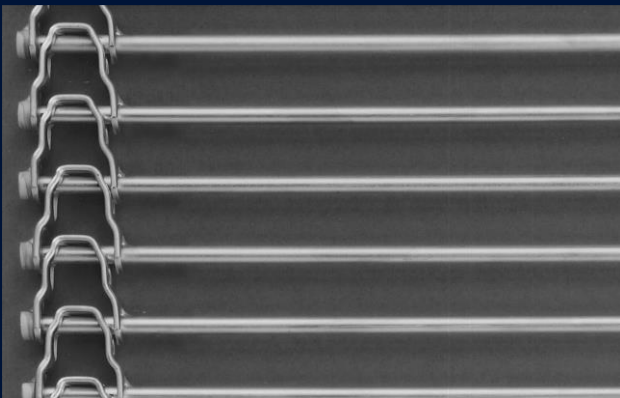
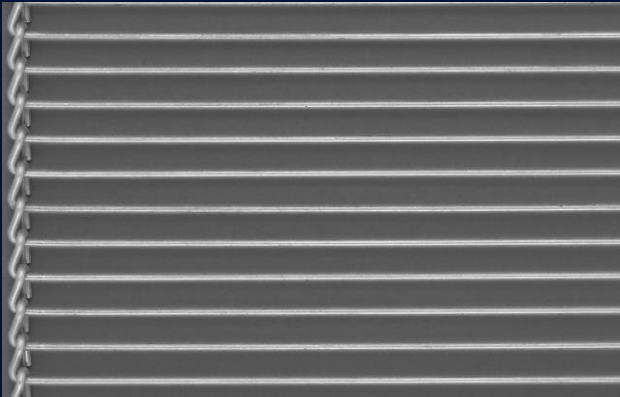


CONVEYOR BELTS

CROSSROD BELT

GROUP 900

CROSSROD BELT



The crossrod belts of group **900** consist of straight cross rods with different edge finishes.

PROPERTIES

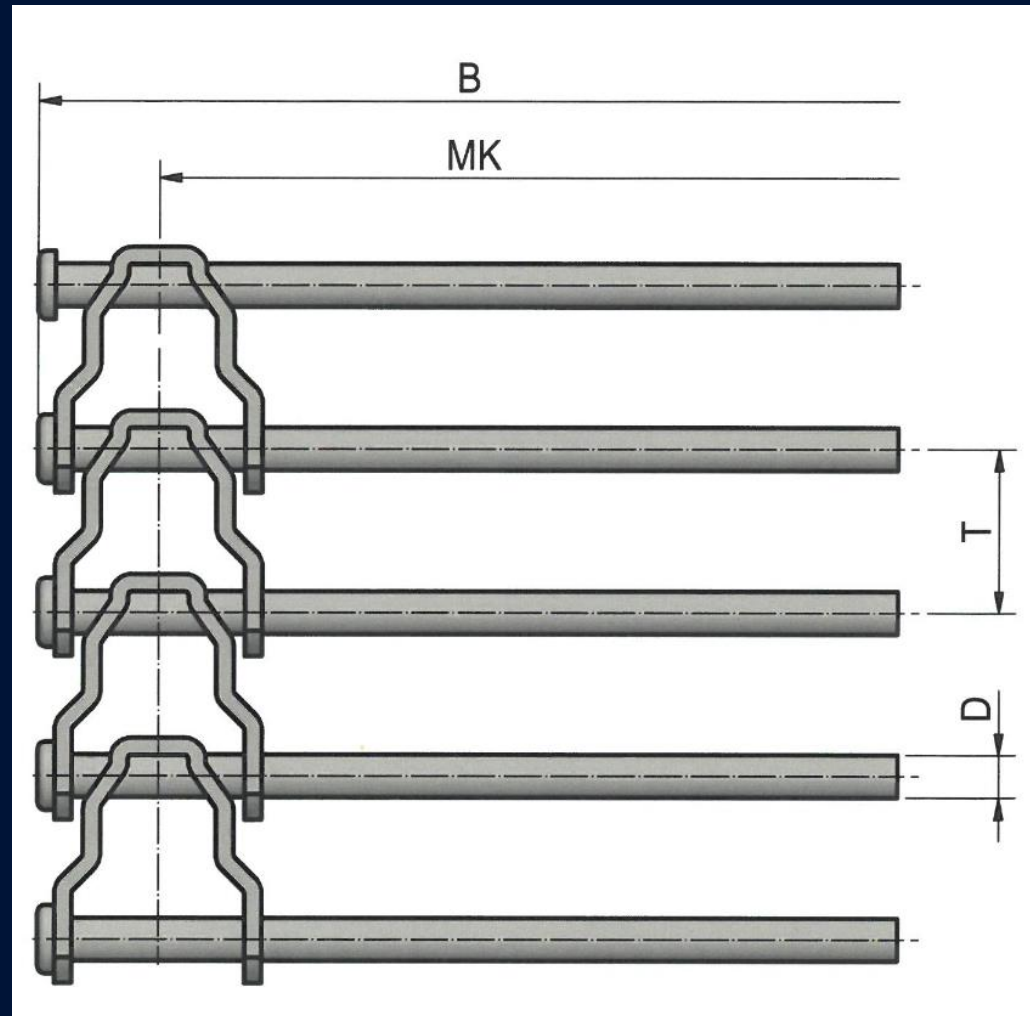
- Even speed and smaller roller diameter due to chain wheel drive.
- Large open area. Easy to clean.
- Curve-going depending on edge finish.

MATERIALS

Stainless steel of material no. 1.4301.

Further materials on request.

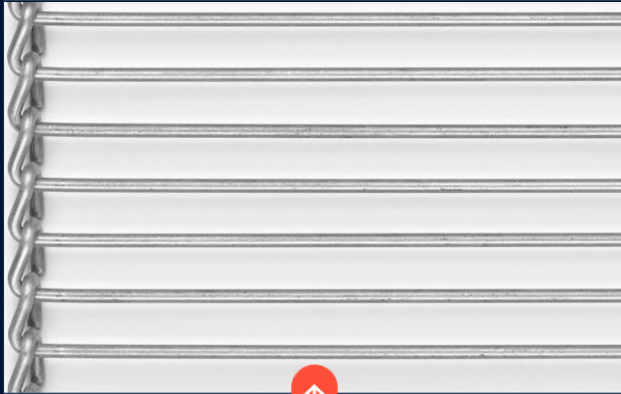
CROSSROD BELT



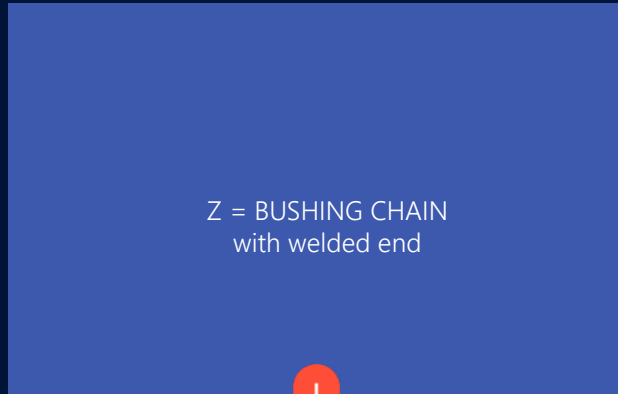
B = Belt width
 D = Cross rod thickness
 MK = Centre - Centre chain edge
 T = Pitch

CROSSROD BELT

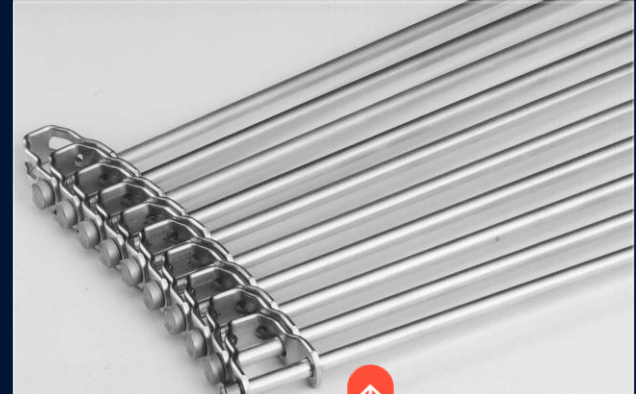
EDGE FINISHES



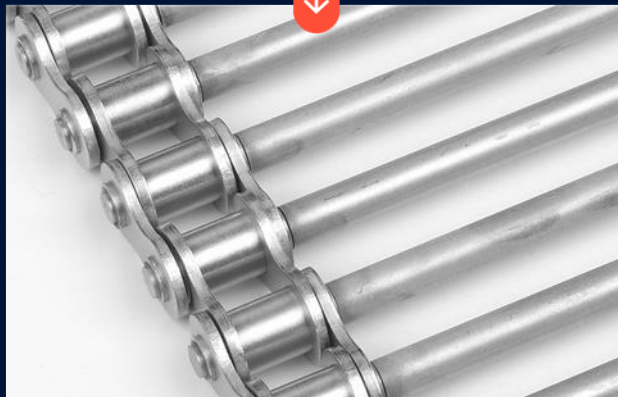
S = LOOPED EDGE



Z = BUSHING CHAIN
with welded end

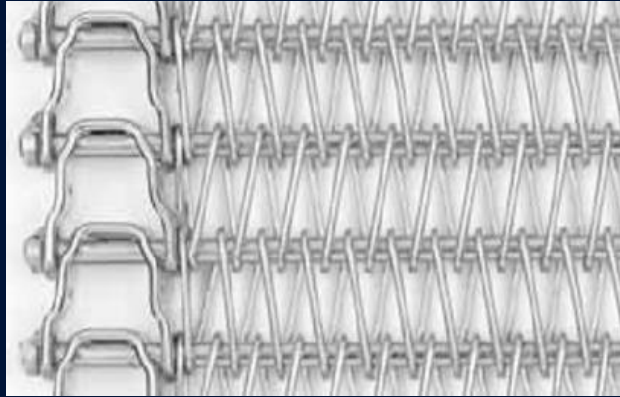


So = SPOCKET CHAIN
with welded end



CROSSROD BELT

SPECIAL VERSION



FILLING SPIRALS IN DIFFERENT WIRE THICKNESS WITH DIFFERENT PITCHES

STANDARD VERSIONS FOR GROUP 900

	[mm]	
Ø Cross rod	5.0	Further dimensions on request.
Pitch	19.05 and 27.43	